

# PALSADES SHARED USE PATH STUDY

Community Visioning Workshops

March 2024

# WHAT IS A VISIONING WORKSHOP?

# Community Visioning Workshop

- Generally, *community visioning* is
  - a **collaborative** process of . . .
  - giving the people who live, work, and play in a place the **opportunity** to have a say about what they want their community to be like in the future.
- For our workshop, we will be focusing on issues of walking and biking in your communities.

# WHO IS UNDERTAKING THE STUDY?

# New York Metropolitan Transportation Council (NYMTC)



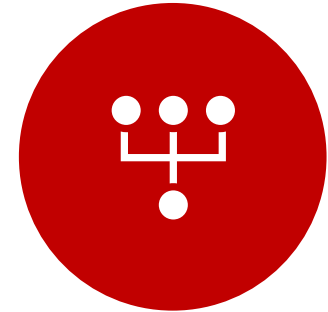
*A METROPOLITAN  
PLANNING  
ORGANIZATION* FOR  
NEW YORK CITY, LONG  
ISLAND & THE LOWER  
HUDSON VALLEY



A REGIONAL COUNCIL  
OF GOVERNMENTS  
CONSISTING OF NINE  
VOTING & SEVEN  
ADVISORY MEMBERS



AN ORGANIZATION  
REQUIRED BY FEDERAL  
LEGISLATION WHICH  
AUTHORIZES FUNDING  
FOR TRANSPORTATION



AN ORGANIZATION  
RESPONSIBLE FOR THE  
MANDATED  
METROPOLITAN  
TRANSPORTATION  
PLANNING PROCESS

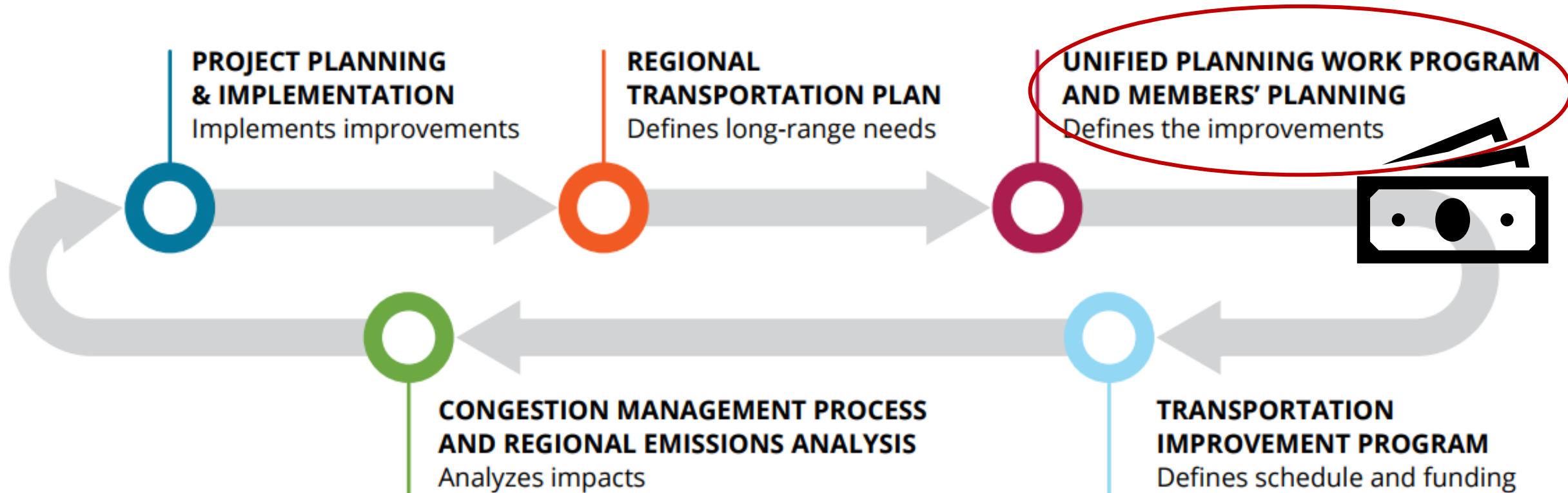
# NYMTC Membership



## Advisory



# Metropolitan Transportation Planning Process



# NJTPA Region

**Bergen**

**Essex**

**Hudson**

**Hunterdon**

**Jersey City**

**Middlesex**

**Monmouth**

**Morris**

**Newark**

**Ocean**

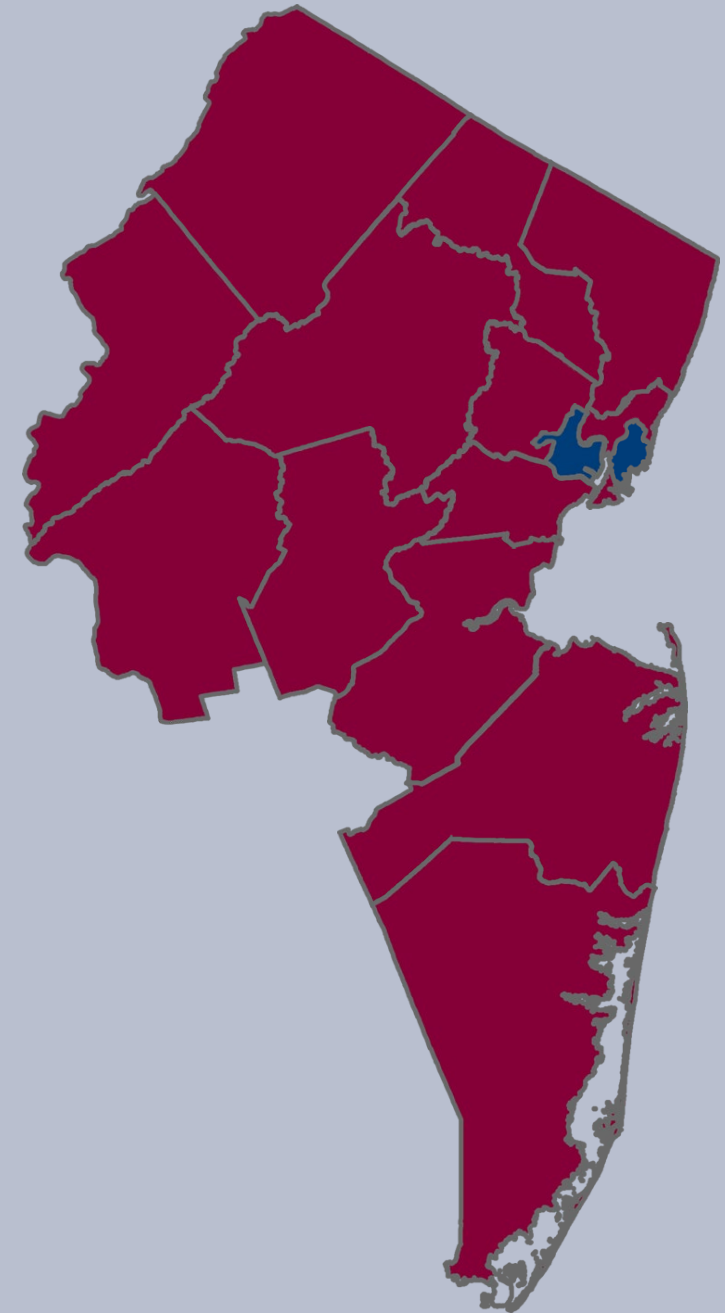
**Passaic**

**Somerset**

**Sussex**

**Union**

**Warren**





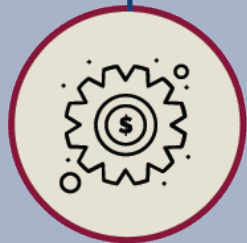
# NJTPA Board and Committees

Bergen Essex Hudson Hunterdon Jersey City Middlesex Monmouth

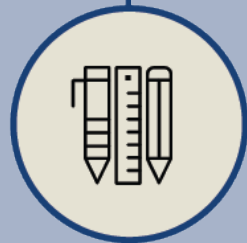
Morris Newark Ocean Passaic Somerset Sussex Union Warren

NJDOT NJ TRANSIT Port Authority Governor's Rep. Citizens' Rep.

## Standing Committees



Planning & Economic  
Development Committee



Project Prioritization  
Committee



Freight Initiatives  
Committee



Regional Transportation  
Advisory Committee



# NJTPA Board Executive Committee

*From left to right:* Morris County Commissioner **Stephen Shaw, Secretary**

Warren County Commissioner **Jason Sarnoski, Second Vice Chair**

Ocean County Commissioner **John P. Kelly, Chair**

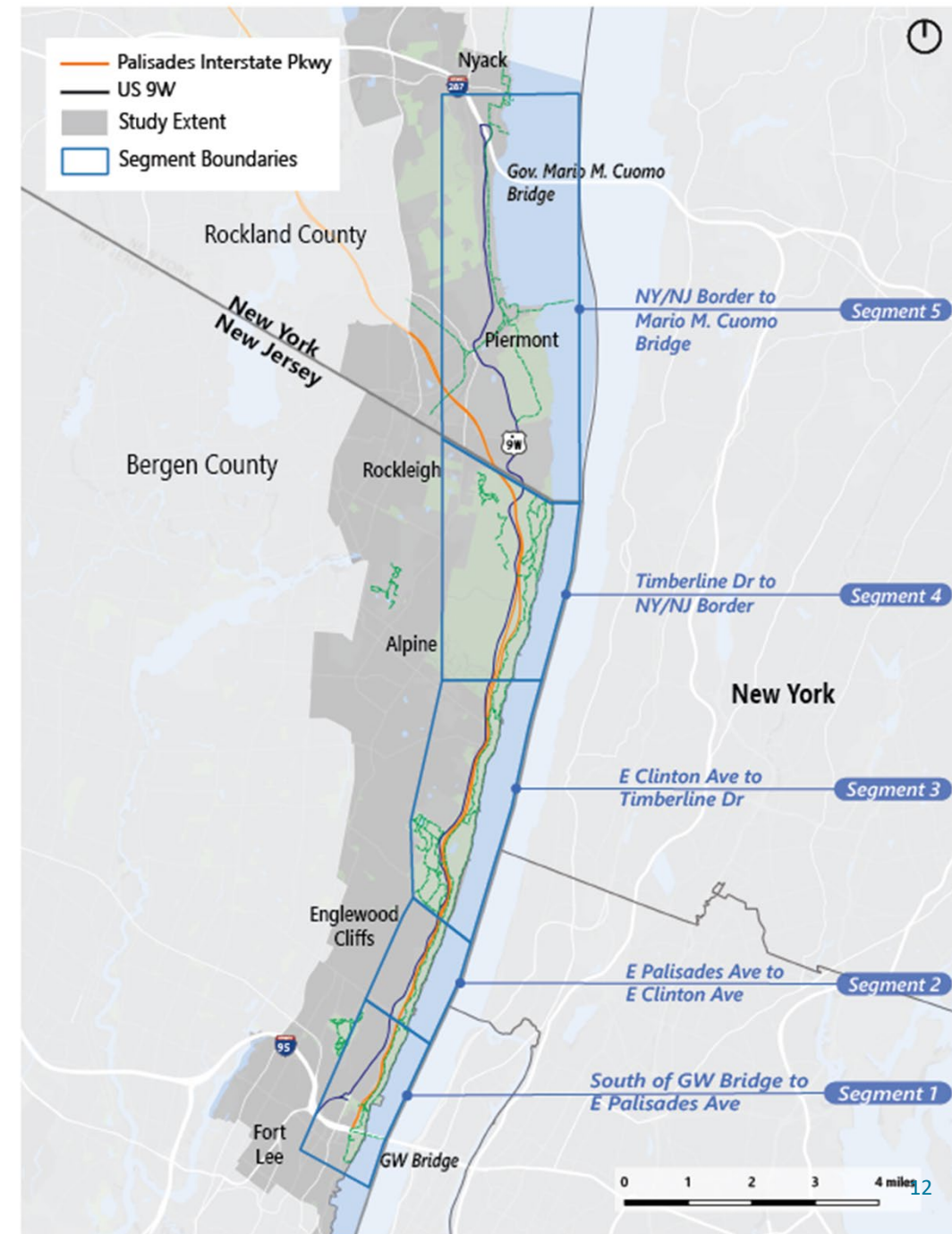
Middlesex County Commissioner **Charles Kenny, First Vice Chair**

Union County Commissioner **Bette Jane Kowalski, Third Vice Chair**

# STUDY SCOPE

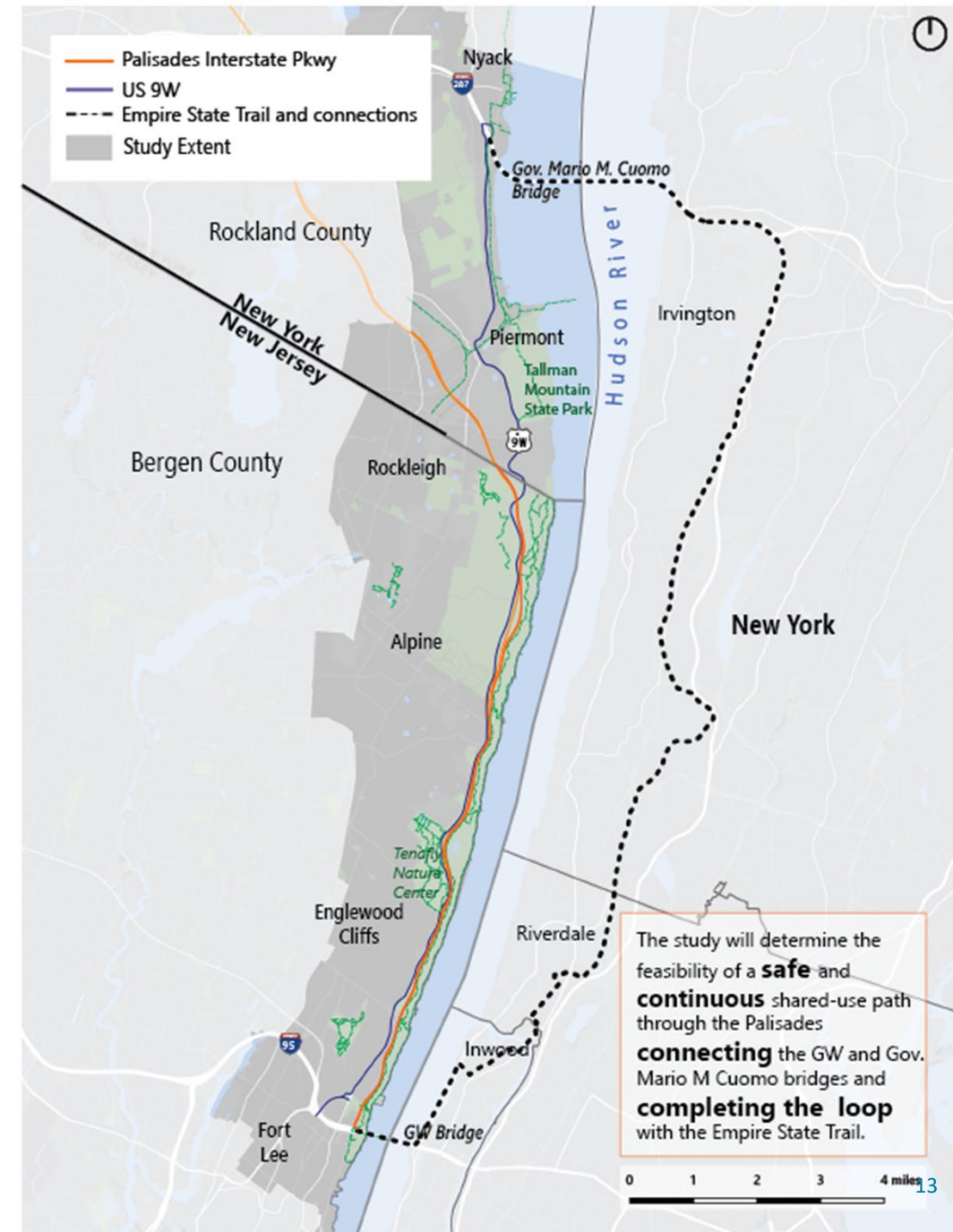
# Study Area

- Divide into five distinct segments
  1. Fort Lee
  2. Englewood Cliffs
  3. Tenafly
  4. Alpine
  5. Rockland County



# Study Scope

- Determine if a Shared Use Path connection from the George Washington Bridge to the Governor Mario Cuomo Bridge is **feasible**.
- The feasibility of the path should be based on the following:
  1. Physical Geography
  2. Needs, Modalities & Safety (balancing the needs and conveyances of potential path users)
  3. Community Character



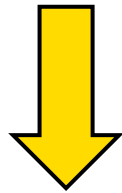
# Study Scope

- Overall feasibility
- Potential alignments
- Opportunities for amenities, gathering spaces, and aesthetic elements
- Identification of next steps



# Study Timeline

We are here now!



Background research and existing conditions

Findings and draft recommendations

Public review of findings and draft recommendations

## *What happens next?*

*Consideration of future opportunities by the member agencies of NYMTC and NJTPA. This could mean:*

- No future action or*
- Detailed design*
- Environmental impact study*
- Programmed funding*

# Poll

## Two Ways to Join

1. Join the poll at  
[www.menti.com](https://www.menti.com)  
Use Code: 6981 8790
2. Or scan the QR Code





# CURRENT STUDY AREA CONDITIONS

# Current Conditions

- Walking, hiking, and biking routes
- The trail network features several trails, some paved and some meant more for walking

# Different Users and Uses

## Users

- Walkers, joggers, runners
- Bikers, e-bikers, scooters, rollerblades, rollers
- Strollers, wheelchairs
- Children, elderly

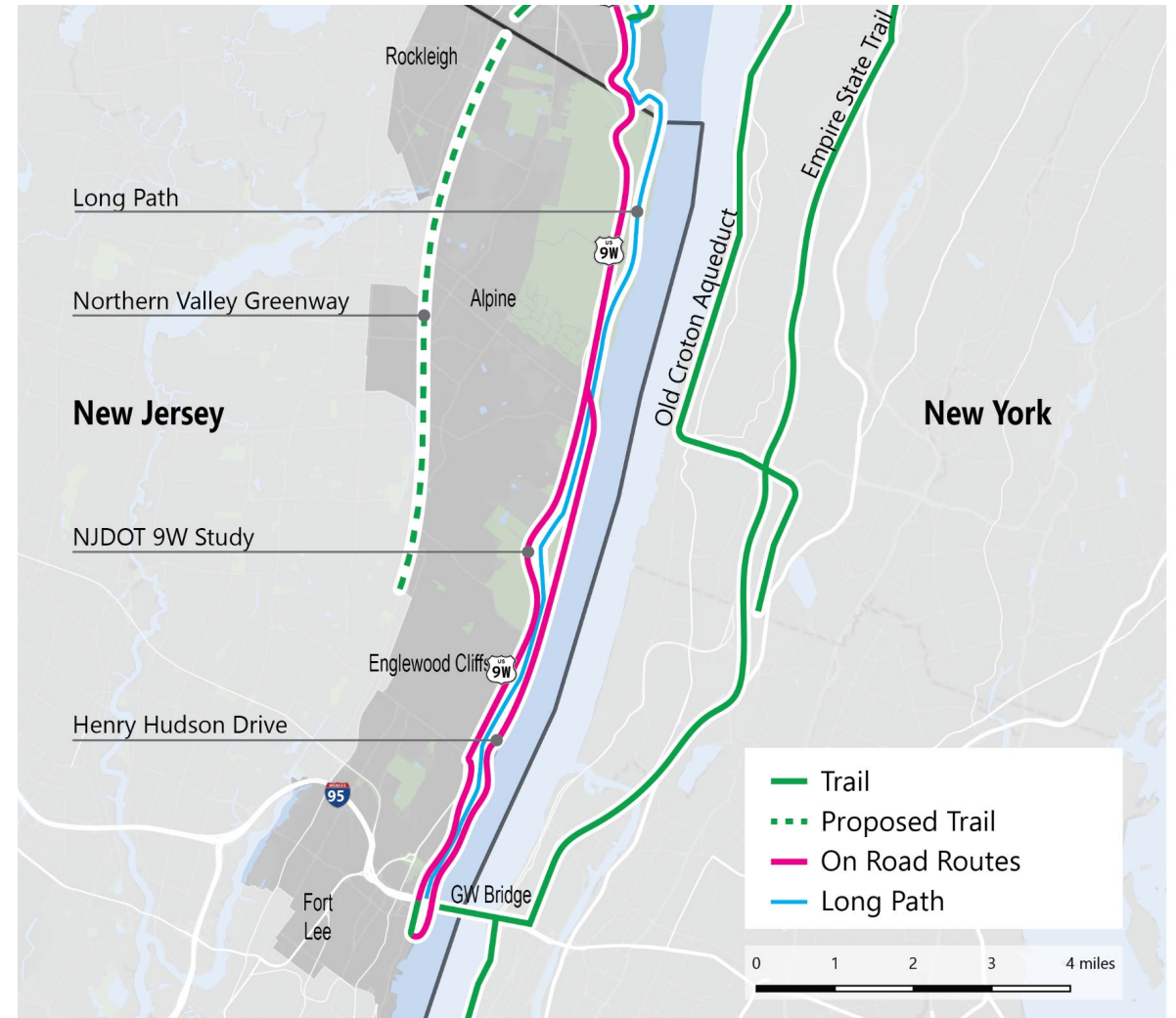
## Uses

- Individuals, groups, families
- Recreation, exercise, relaxing, commuting, to be in nature, birding, dog walking



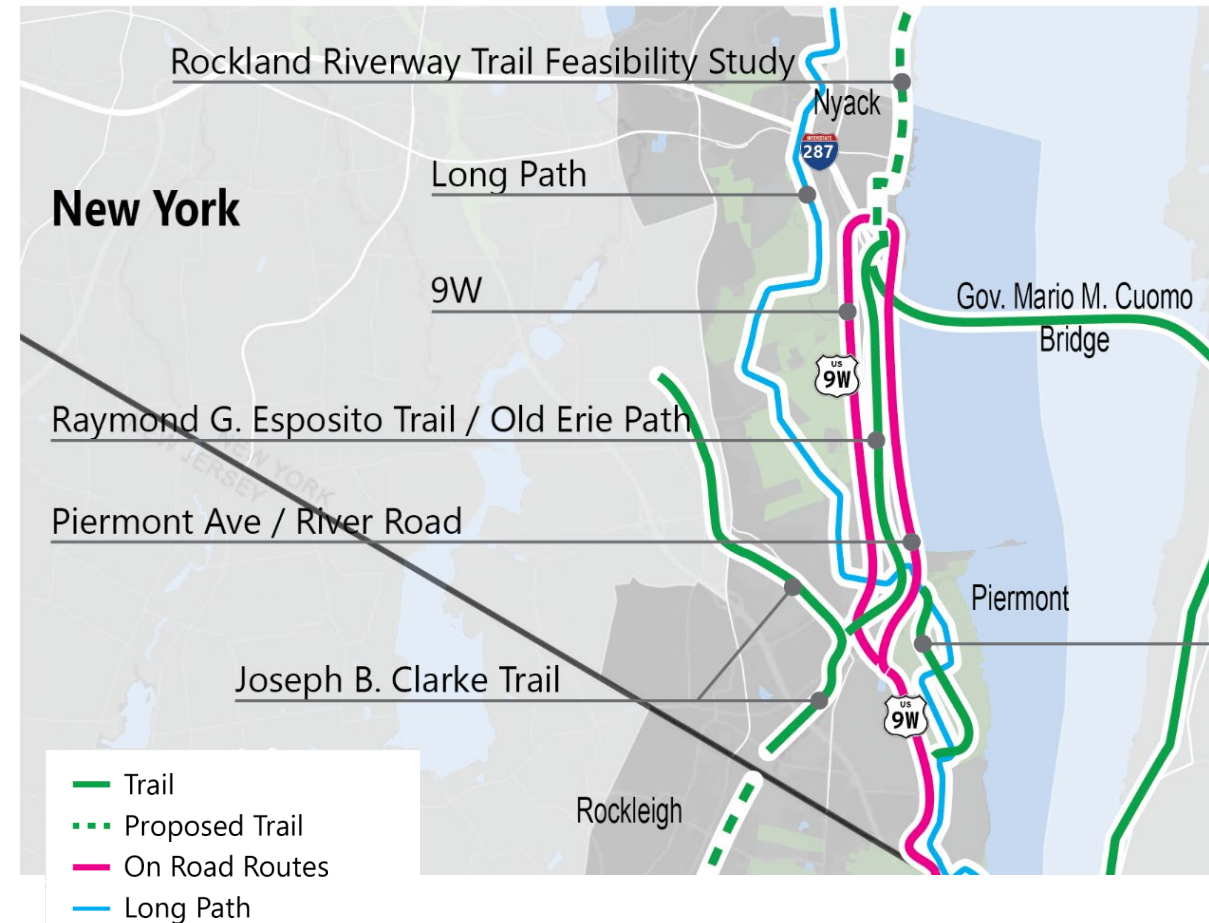
# New Jersey

- Long Path
- Northern Valley Greenway
- Route 9W
- Henry Hudson Drive



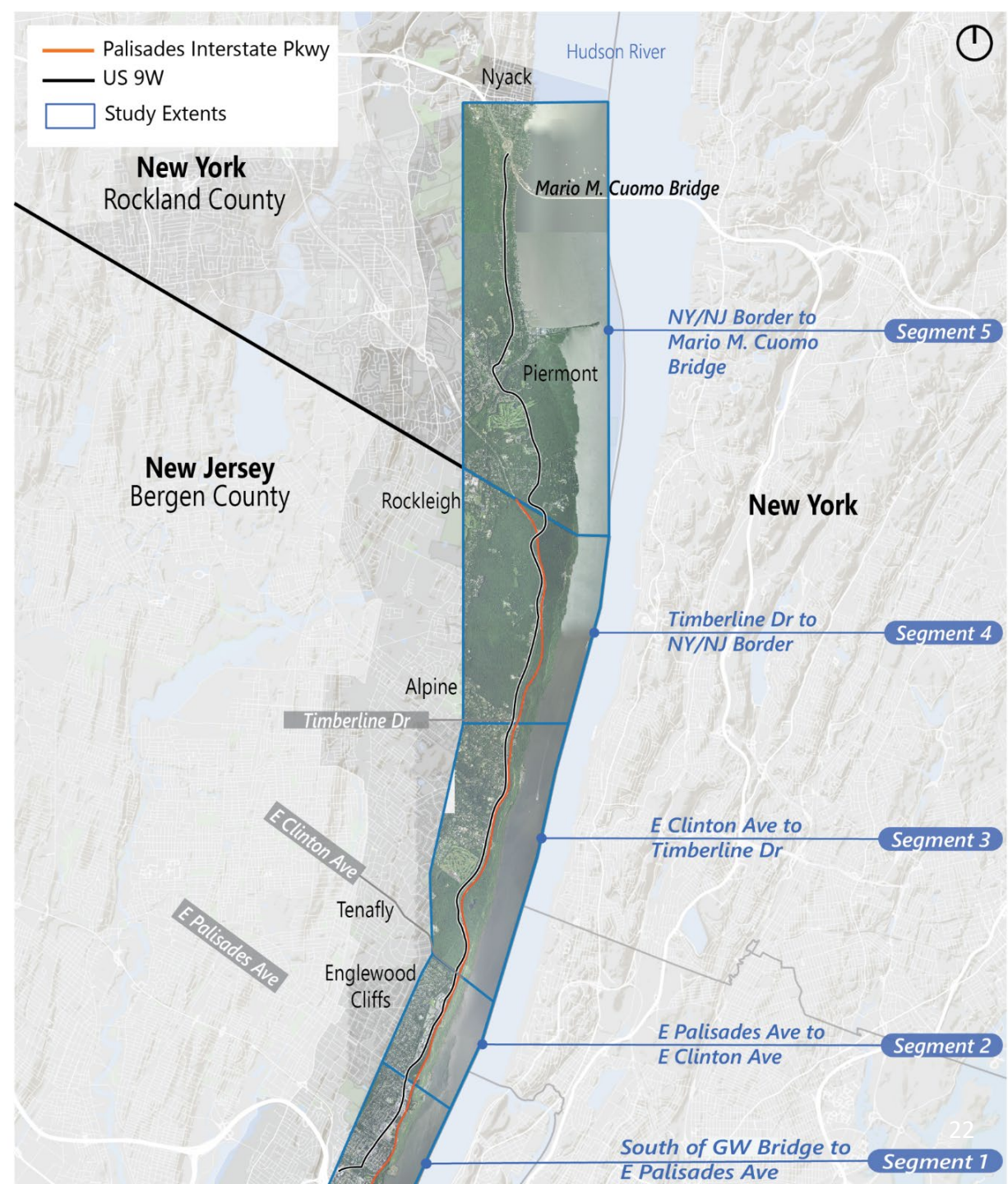
# New York

- Rockland Riverway Trail Feasibility Study
- Long Path
- Route 9W
- Raymond G. Esposito Trail / Old Erie Path
- Piermont Ave / River Road
- Joseph B. Clarke Trail
- Tallman Bike Path



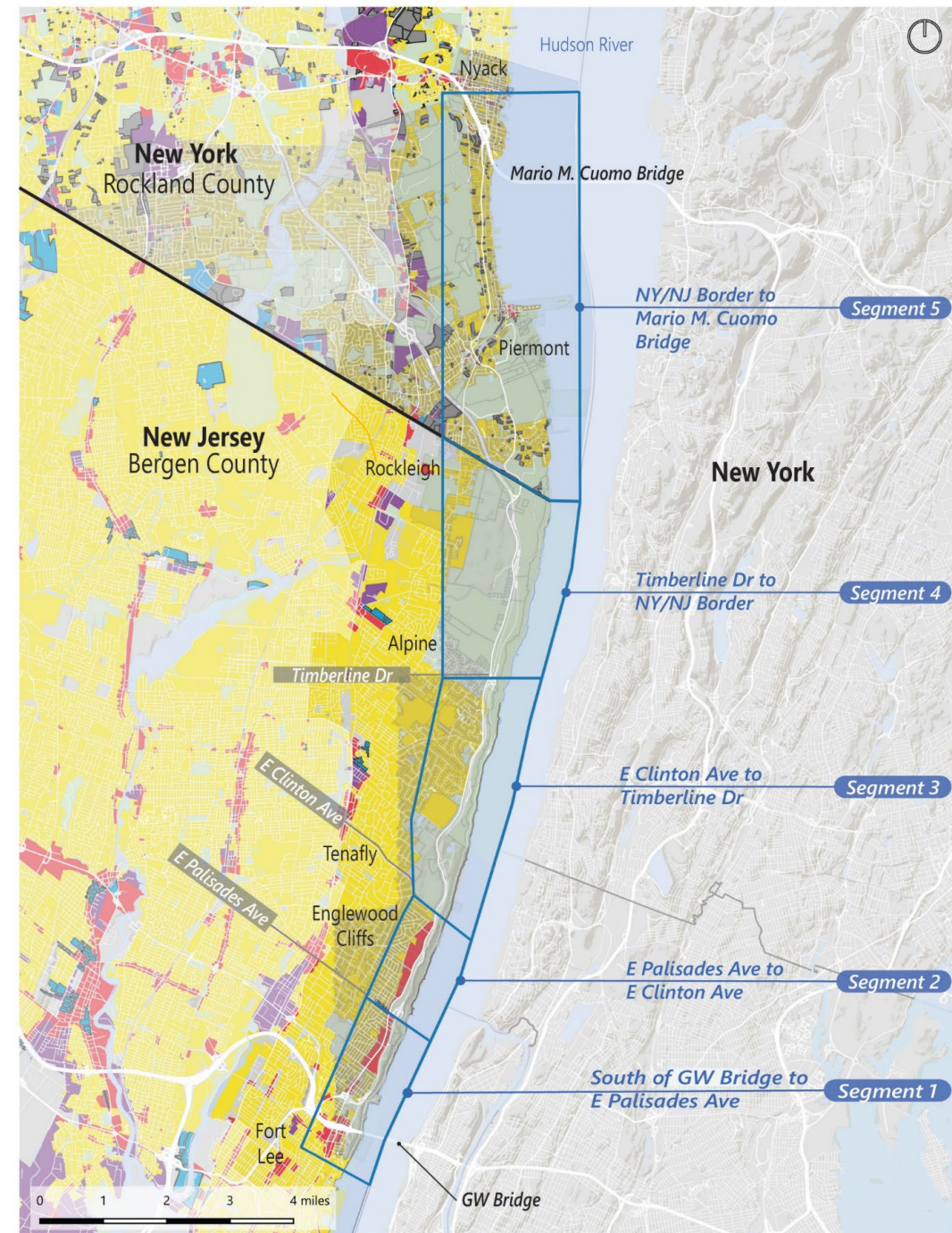
# Current Conditions

- Land Use
- Topography
- Demographics
- Equity
- Crash Analysis



# Land Use

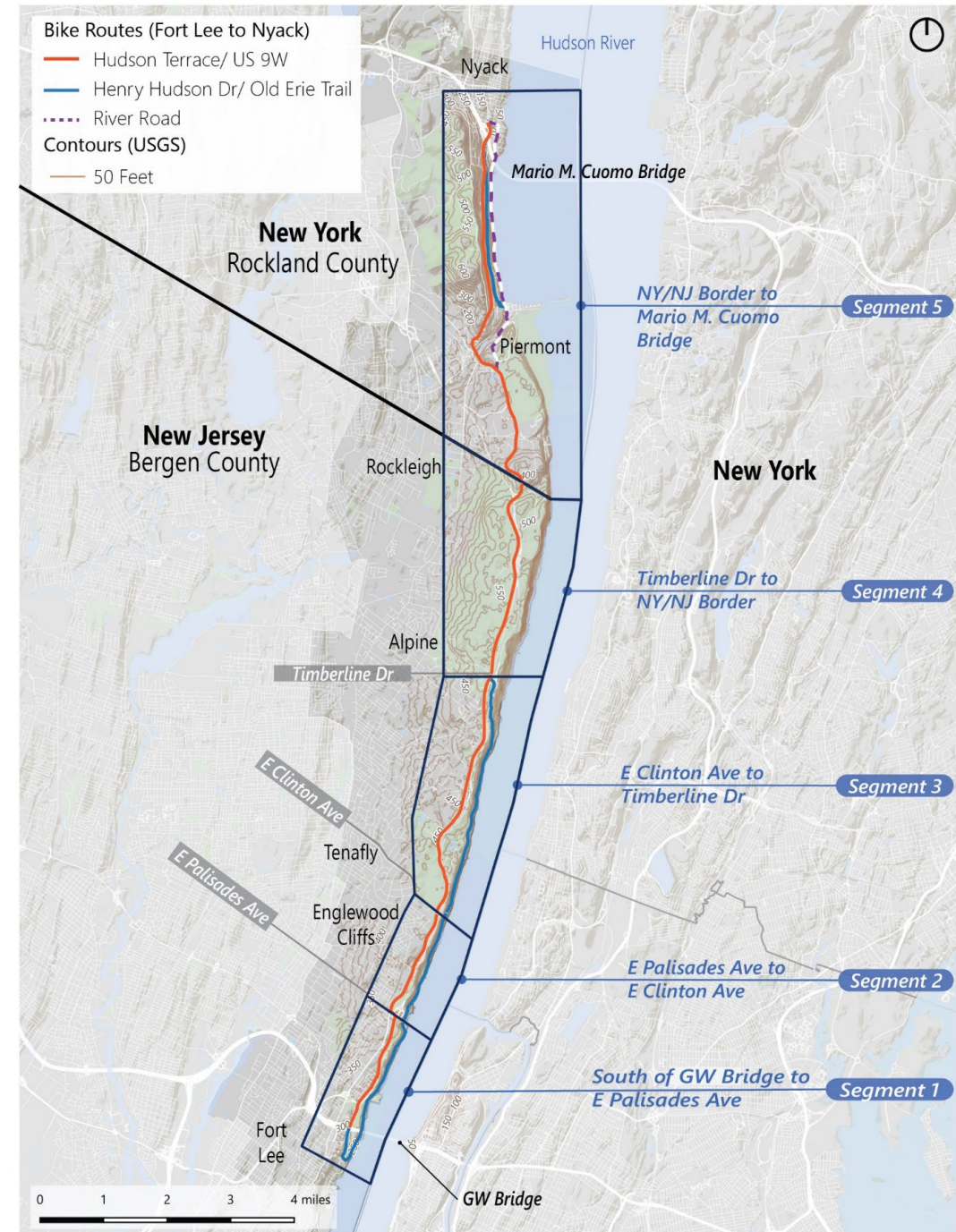
1. **Fort Lee:** Dense, urban, mixed-use, major junctions of roads and bridge
2. **Englewood Cliffs:** Office parks along 9W, single-family housing upland
3. **Tenafly:** low density residential
4. **Borough of Alpine:** mostly parkland with dispersed single-family homes
5. **Rockland County:** Downtowns of Piermont and Nyack separated by Grand View, Tallman Mtn SP



# Topography

The Palisades provide beautiful scenery, viewpoints, and challenging terrain

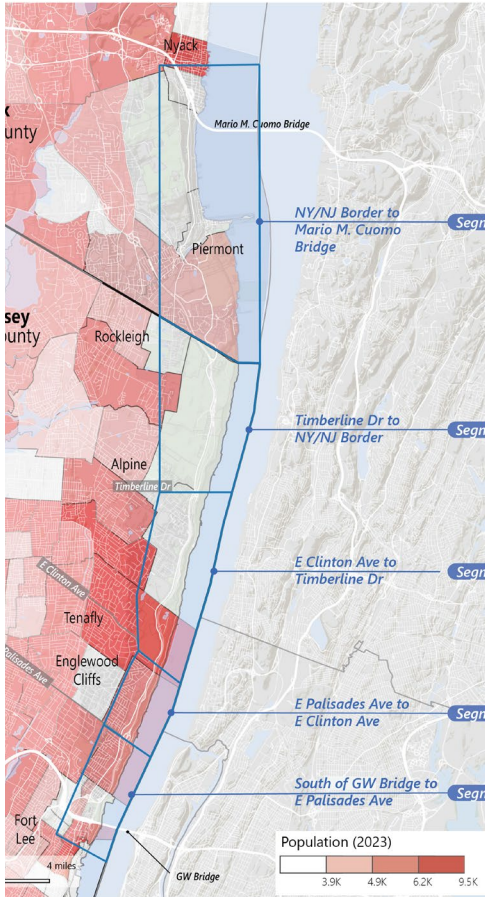
- 9W is mostly flat
- Henry Hudson Dr is mostly car-free but very hilly
- Rail trails are mostly flat
- Long Path is hilly over rough terrain



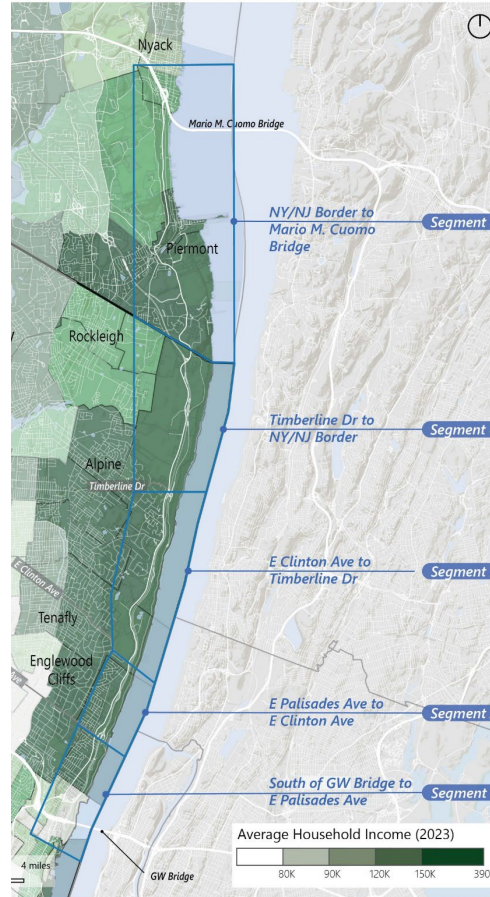


# Demographics

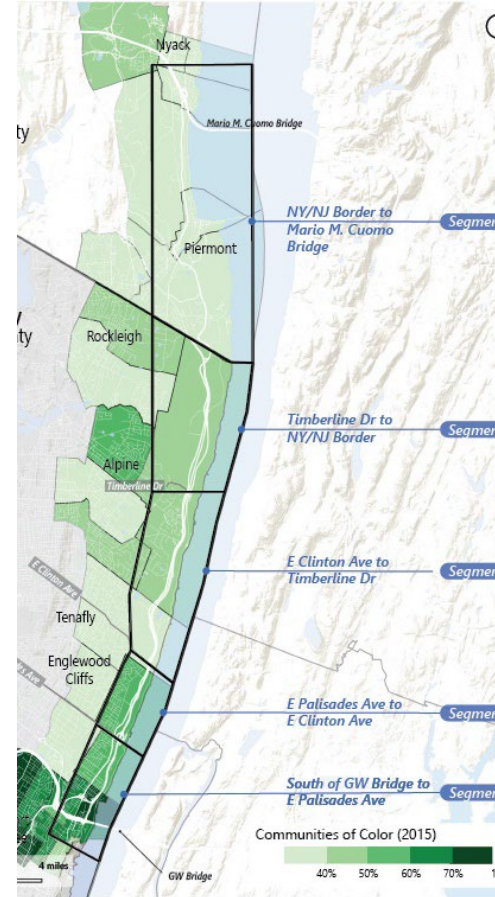
Population



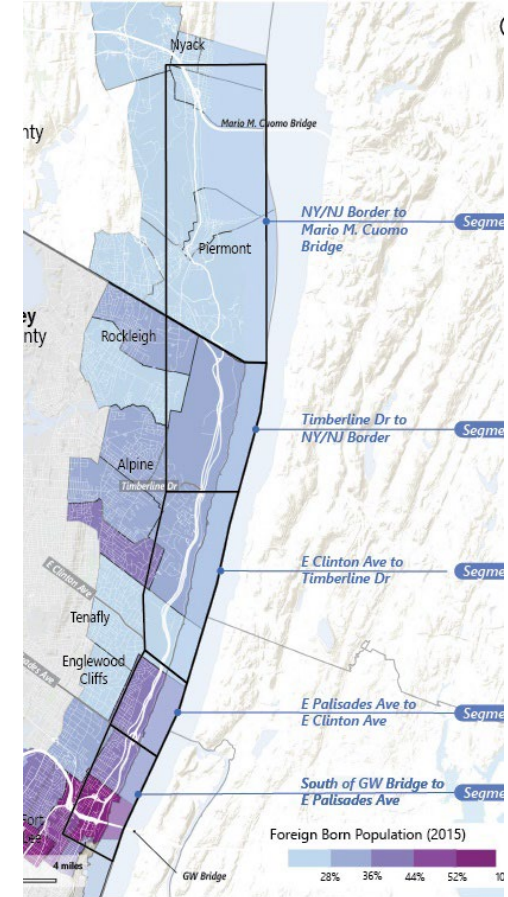
Household Income



Communities of Color

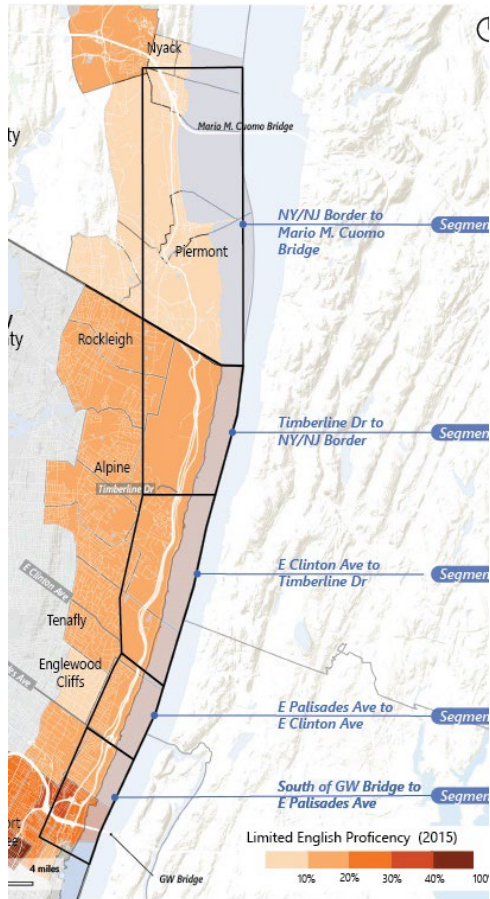


Foreign Born Population

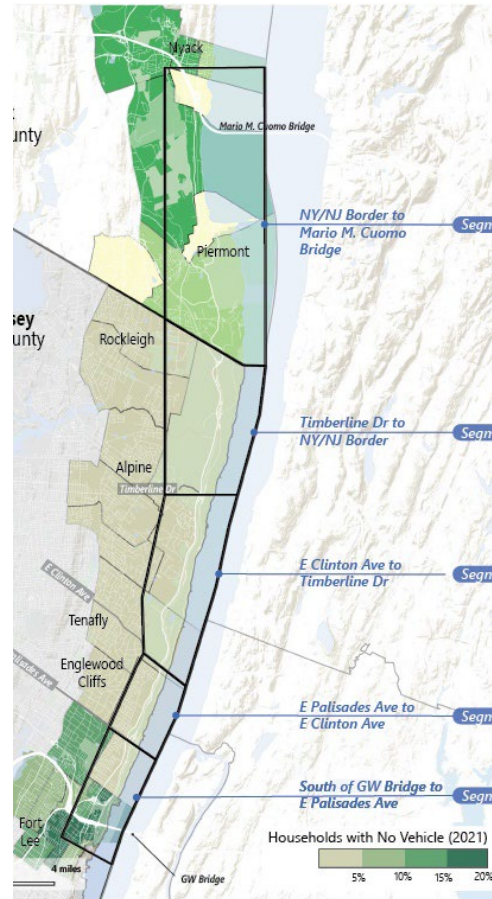


# Demographics

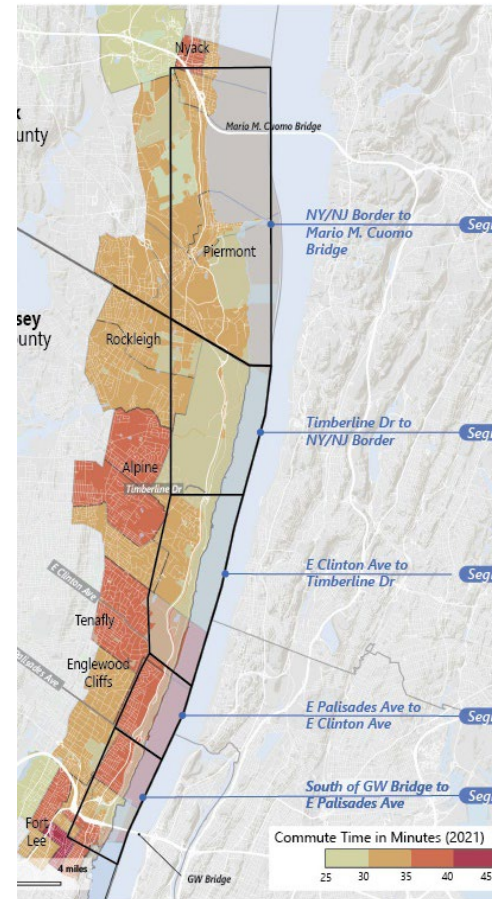
Limited English Proficiency



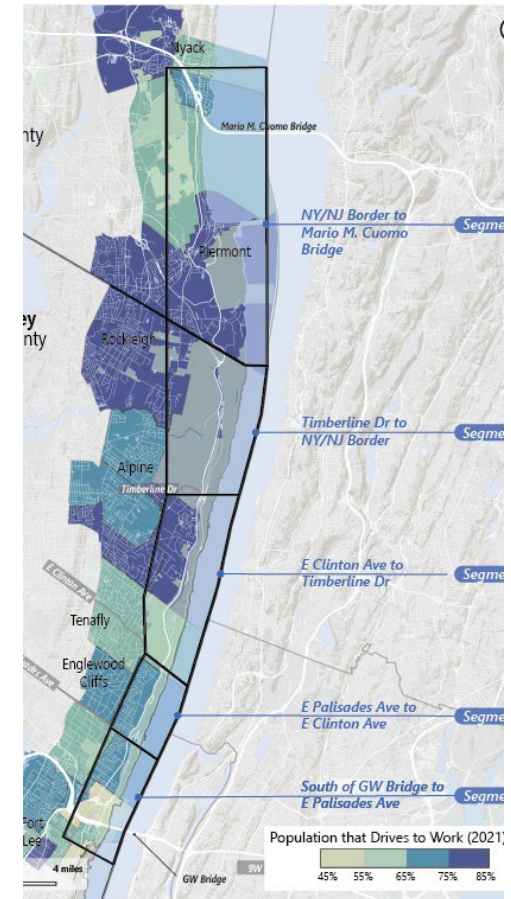
Car-Free Households



Commute Time

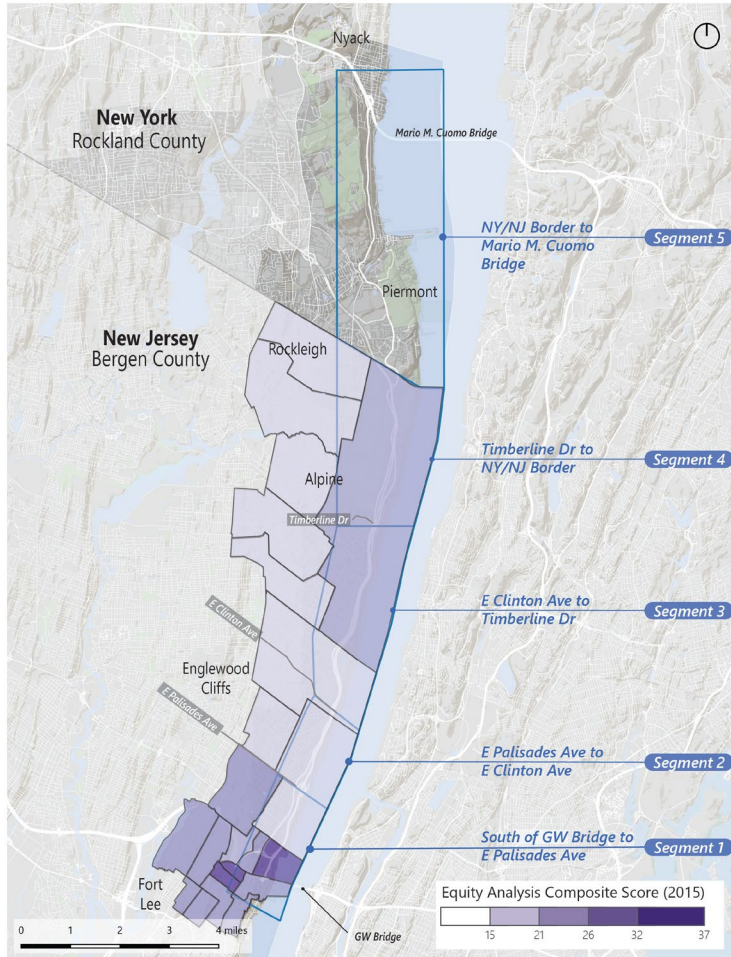


Drive to Work

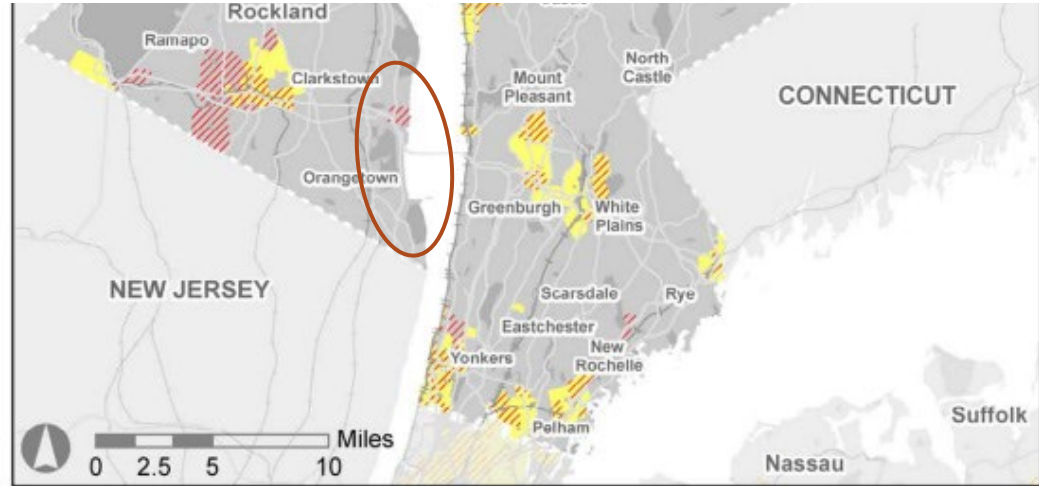


# Equity

## New Jersey



## New York



**Low-Income Community**

Tracts where 14% or more of the population earned an income in 2018 at or below the poverty level.

*Data from the 2018 ACS, 5-year estimates.*

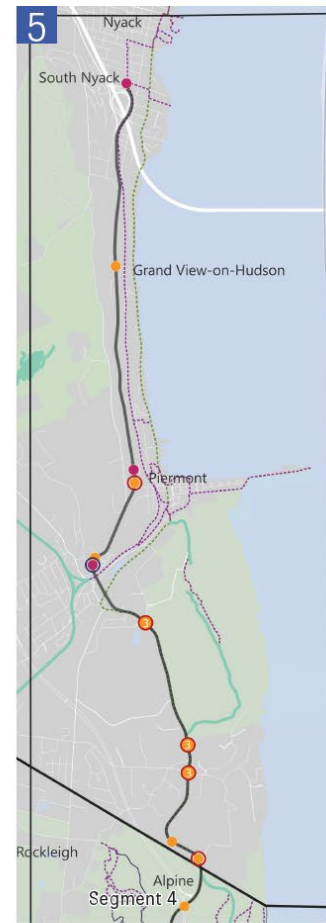
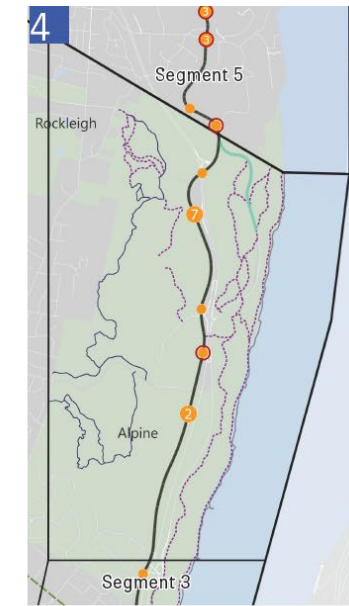
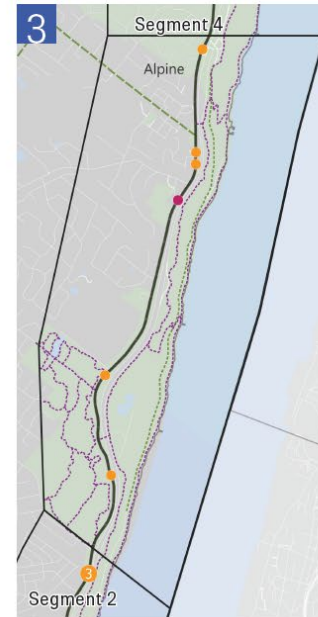
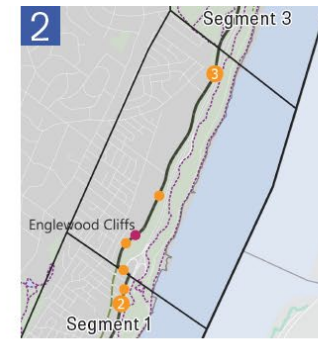
**Minority Community**

Tracts where the minority population (all racial and ethnic groups excluding non-Hispanic Whites) in 2018 was 57% or more of the regional average.

*Data from the 2018 ACS, 5-year estimates.*

# Crash Analysis

- Crashes that involved people walking and biking
  - 4 severe crashes in the 5-year study period
- Most common crashes:
  - At intersections
  - During weekend daylight hours
  - Men ages 30-59



— US 9W

Crash Analysis:

Segment 1- 4 (2016 - 2020) Segment 5 (2018-2023)

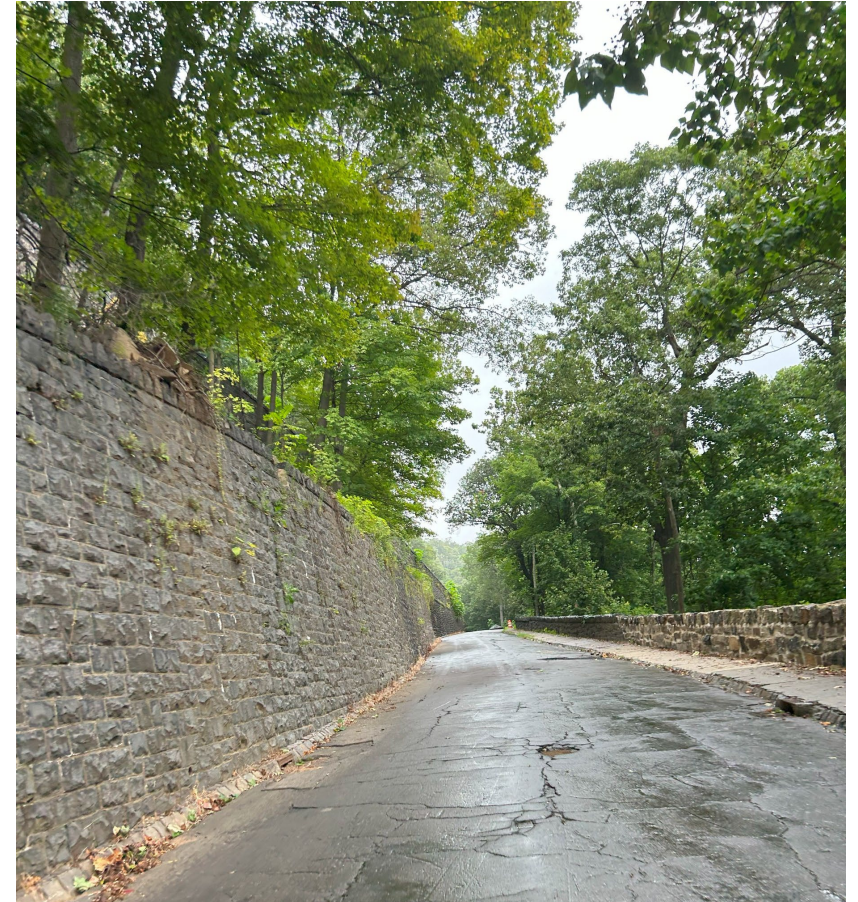
- Pedestrian Crash
- Pedestrian Killed or Seriously Injured (KSI)
- Bicyclist Crashes
- Bicyclist Killed or Seriously Injured (KSI)

# FIRST ROUND OF PUBLIC WORKSHOPS

Involving and collaborating with individuals, groups, or communities in the study area

# Discussion Questions

1. Top of mind issues, aspirations, or concerns?
2. What improvements to walking, hiking, biking and/or rolling are needed in the study area?
3. What benefits from improved walking or biking in the study area would you like to see for your community?
4. How would you measure the success and impact of walking and biking improvements in your community?
5. In your view, what are the barriers or challenges to implementing walking and biking improvements in the study area?
6. Any remaining questions?



# Open Questions

## Two Ways to Join

1. Join the poll at  
[www.menti.com](https://www.menti.com)  
Use Code: 7752 6426
2. Or scan the QR Code



# 1. TOP OF MIND ISSUES, ASPIRATIONS, OR CONCERNS?



## **2. WHAT IMPROVEMENTS TO WALKING, HIKING, BIKING AND/OR ROLLING ARE NEEDED IN THE STUDY AREA?**

**3. WHAT BENEFITS FROM IMPROVED WALKING OR BIKING IN THE STUDY AREA WOULD YOU LIKE TO SEE FOR YOUR COMMUNITY?**

# 4. HOW WOULD YOU MEASURE THE SUCCESS AND IMPACT OF WALKING AND BIKING IMPROVEMENTS IN YOUR COMMUNITY?

**5. IN YOUR VIEW, WHAT ARE THE BARRIERS OR CHALLENGES TO IMPLEMENTING WALKING AND BIKING IMPROVEMENTS IN THE STUDY AREA?**

**ANY LAST QUESTIONS?**

# Next Steps

- In-person workshops in May
  - One each in NJ and NY



# THANK YOU!

[WWW.PALISADESPATHSTUDY.COM](http://WWW.PALISADESPATHSTUDY.COM)

[PALISADESPATHSTUDY@GMAIL.COM](mailto:PALISADESPATHSTUDY@GMAIL.COM)