

PALSADES SHARED USE PATH STUDY

Community Visioning Workshops

March 2024

WHAT IS A VISIONING WORKSHOP?

Community Visioning Workshop

- Generally, *community visioning* is
 - a **collaborative** process of . . .
 - giving the people who live, work, and play in a place the **opportunity** to have a say about what they want their community to be like in the future.
- For our workshop, we will be focusing on issues of walking and biking in your communities.

WHO IS UNDERTAKING THE STUDY?

New York Metropolitan Transportation Council (NYMTC)



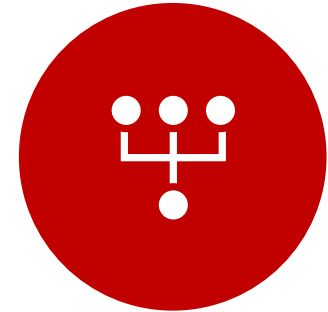
*A METROPOLITAN
PLANNING
ORGANIZATION* FOR
NEW YORK CITY, LONG
ISLAND & THE LOWER
HUDSON VALLEY



A REGIONAL COUNCIL
OF GOVERNMENTS
CONSISTING OF NINE
VOTING & SEVEN
ADVISORY MEMBERS



AN ORGANIZATION
REQUIRED BY FEDERAL
LEGISLATION WHICH
AUTHORIZES FUNDING
FOR TRANSPORTATION



AN ORGANIZATION
RESPONSIBLE FOR THE
MANDATED
METROPOLITAN
TRANSPORTATION
PLANNING PROCESS

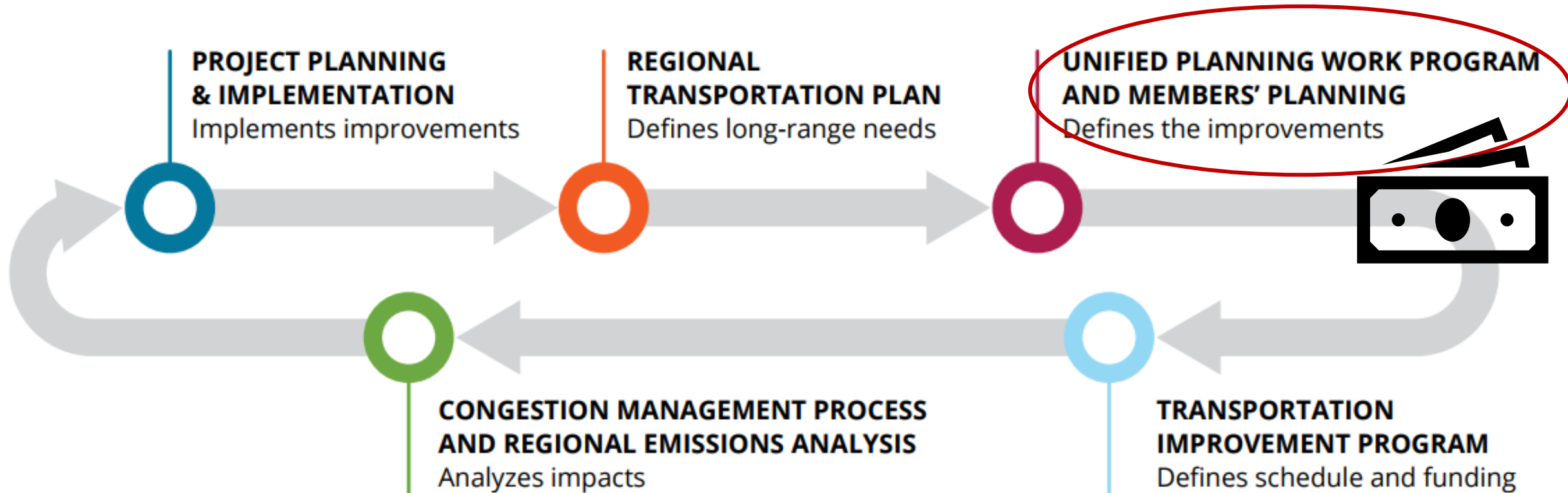
NYMTC Membership



Advisory



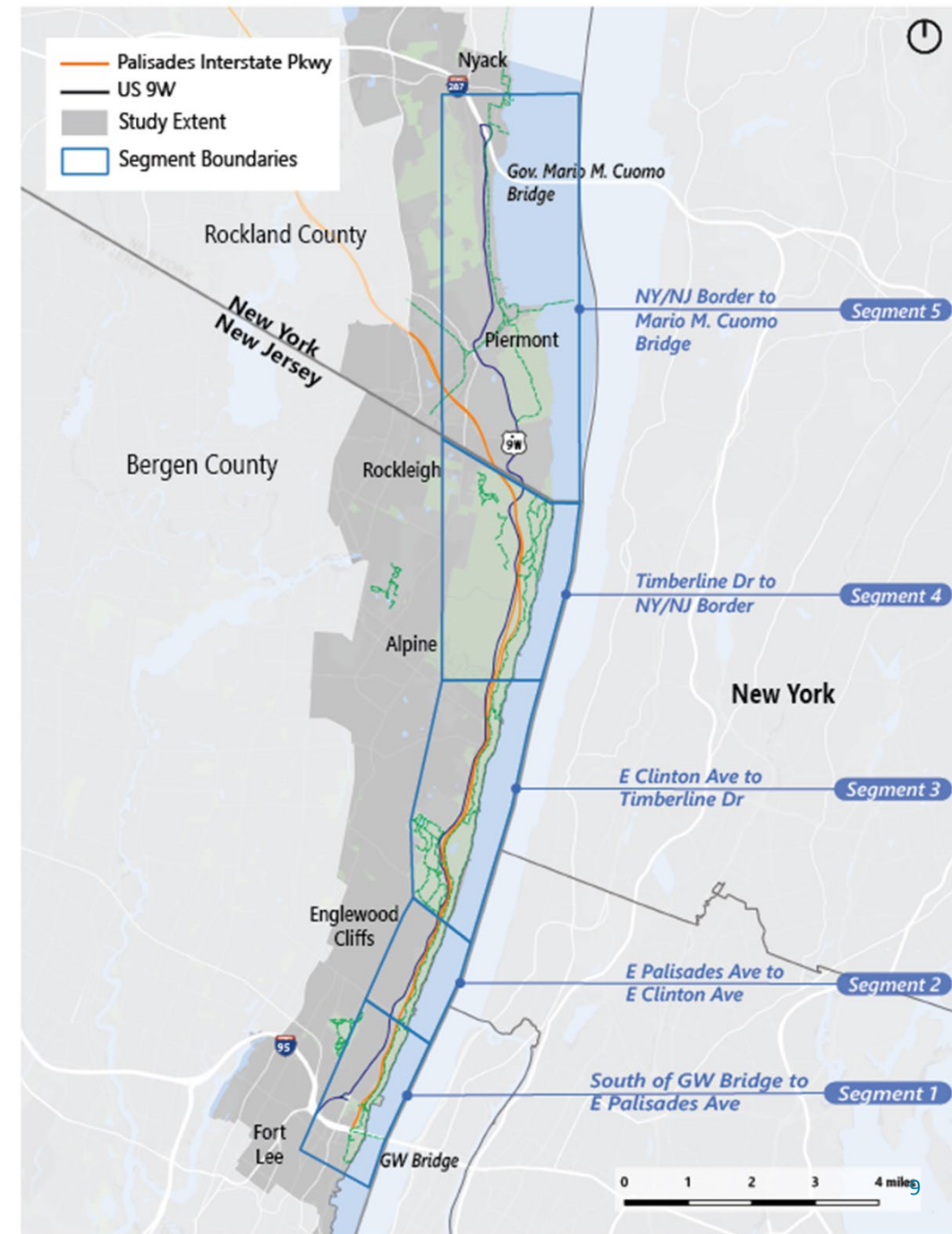
Metropolitan Transportation Planning Process



STUDY SCOPE

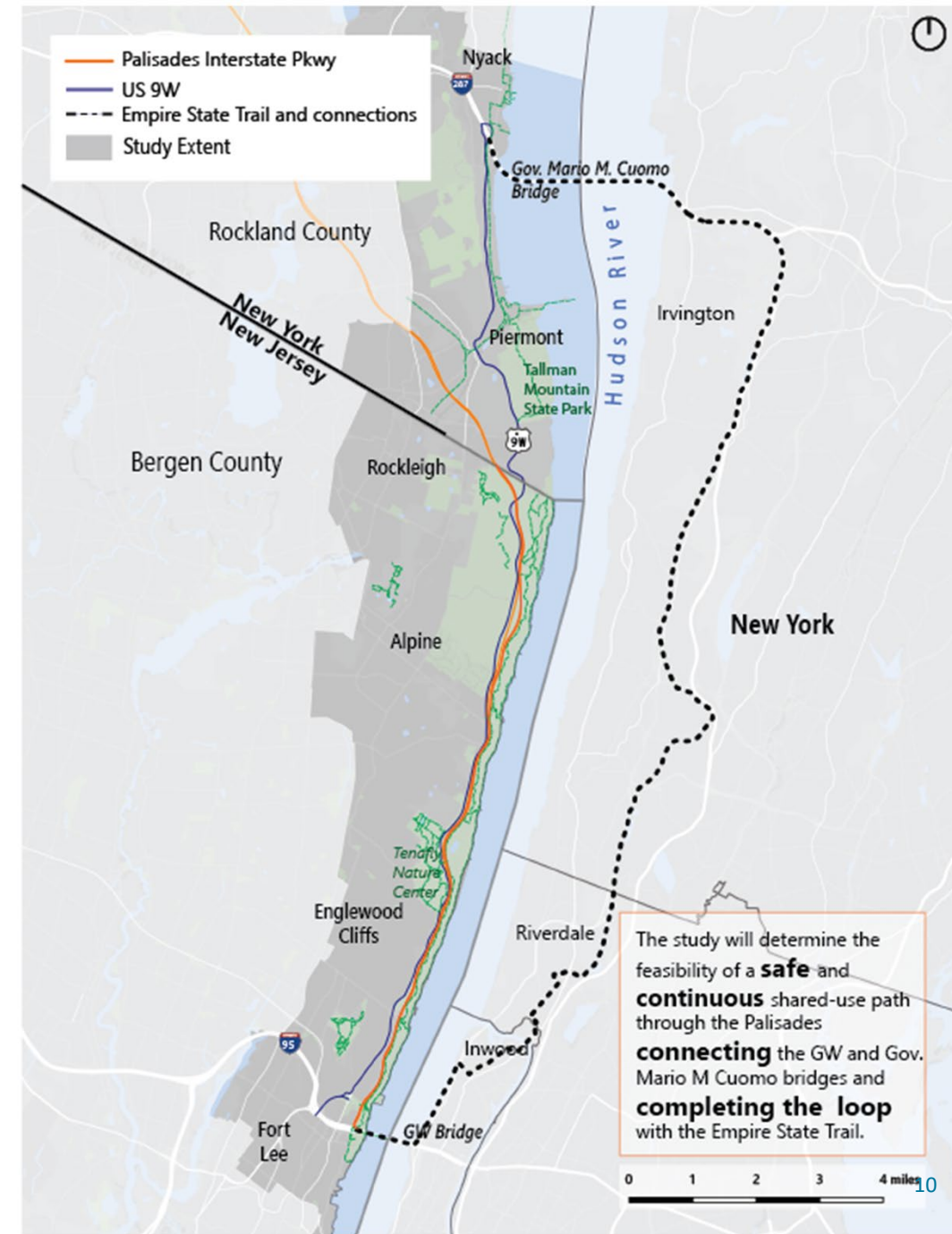
Study Area

- Divide into five distinct segments
 1. Fort Lee
 2. Englewood Cliffs
 3. Alpine Lookout
 4. Borough of Alpine
 5. Rockland County



Study Scope

- Determine if a Shared Use Path connection from the George Washington Bridge to the Governor Mario Cuomo Bridge is **feasible**.
- The feasibility of the path should be based on the following:
 1. Physical Geography
 2. Needs, Modalities & Safety (balancing the needs and conveyances of potential path users)
 3. Community Character



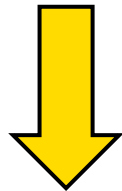
Study Scope

- Overall feasibility
- Potential alignments
- Opportunities for amenities, gathering spaces, and aesthetic elements
- Identification of next steps



Study Timeline

We are here now!



Background research and existing conditions

Findings and draft recommendations

Public review of findings and draft recommendations

What happens next?

Consideration of future opportunities by the member agencies of NYMTC and NJTPA. This could mean:

- No future action or*
- Detailed design*
- Environmental impact study*
- Programmed funding*

Poll

Two Ways to Join

1. Join the poll at
www.menti.com
Use Code: 8970 8415
2. Or scan the QR Code



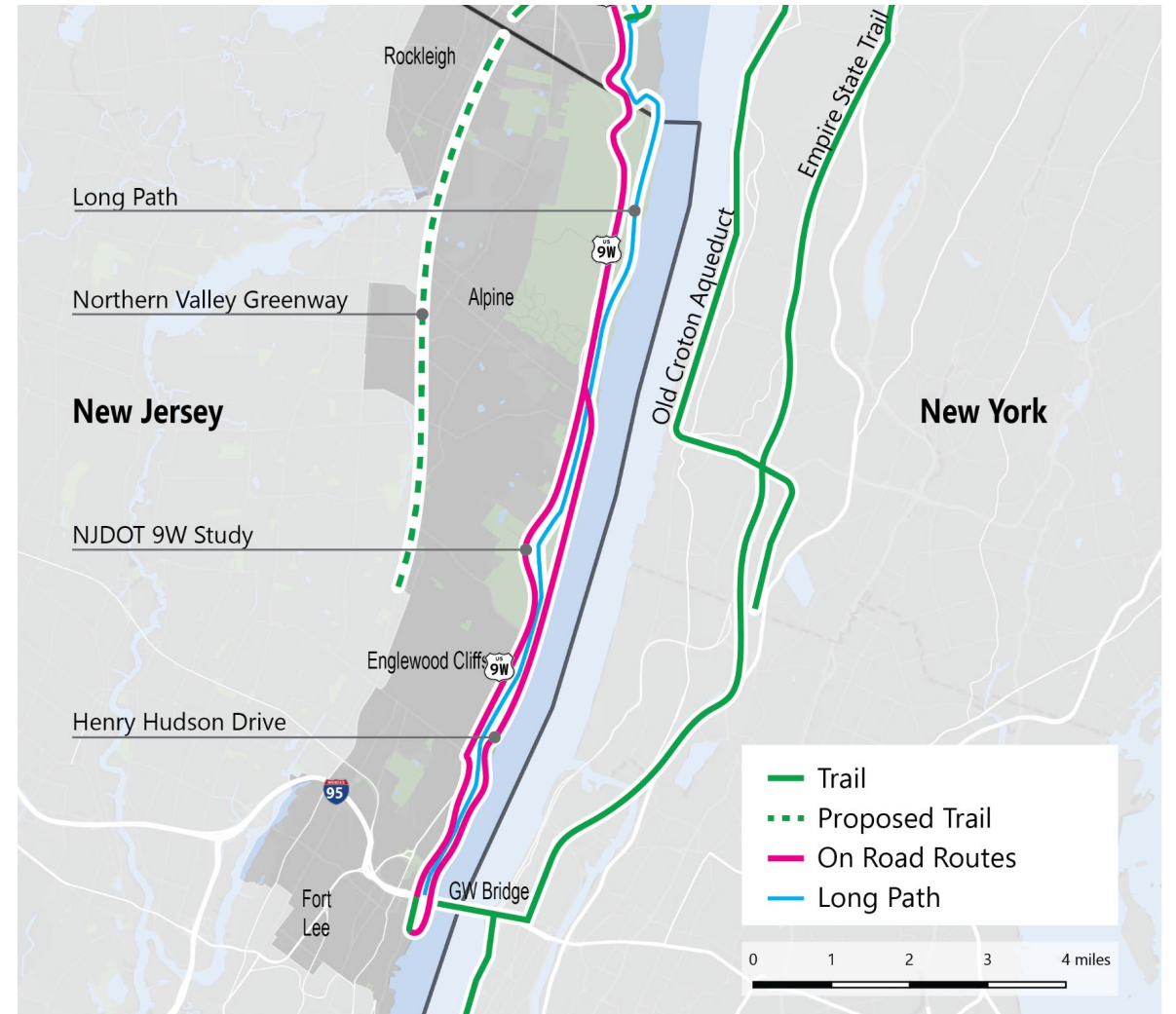
CURRENT STUDY AREA CONDITIONS

Current Conditions

- Walking, hiking, and biking routes
- The trail network features several trails, some paved and some meant more for walking

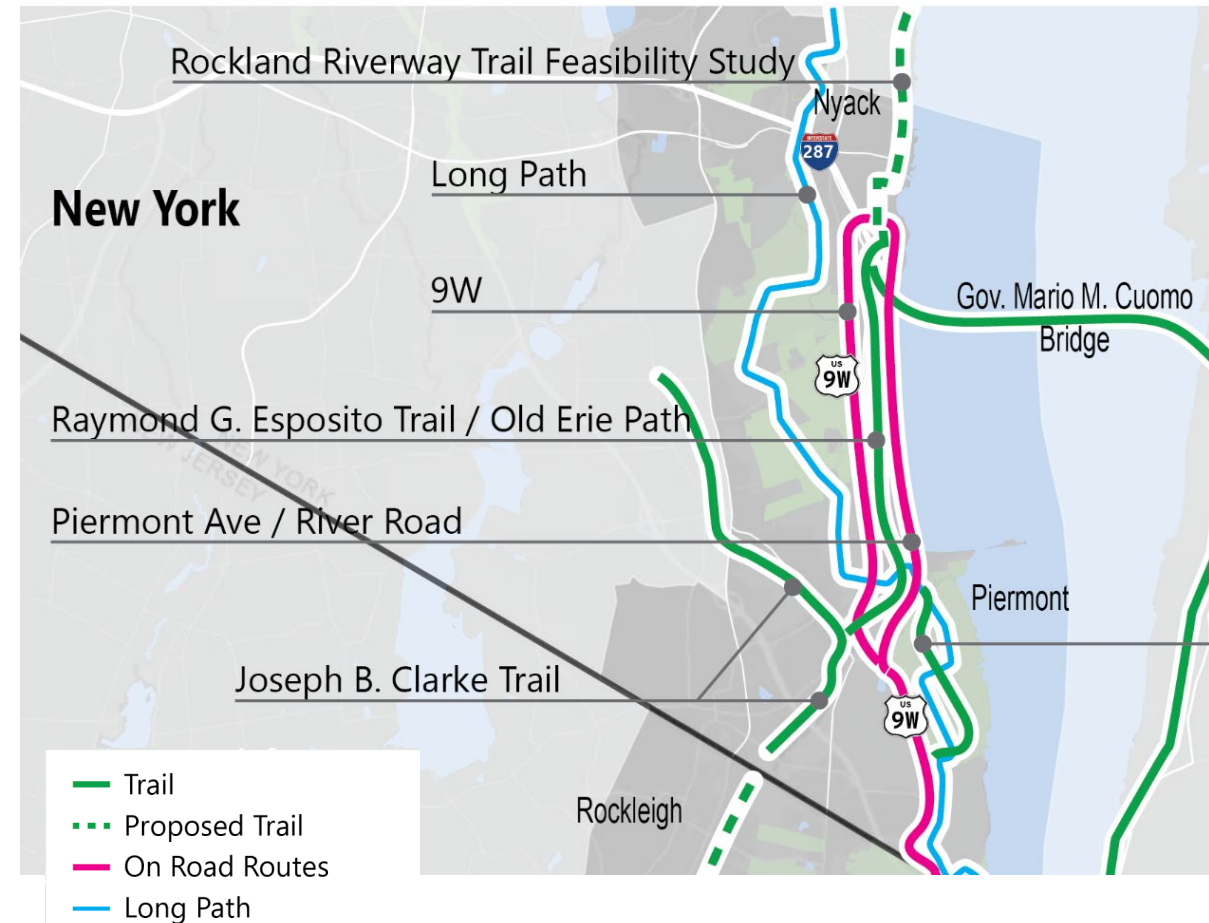
New Jersey

- Long Path
- Northern Valley Greenway
- Route 9W
- Henry Hudson Drive



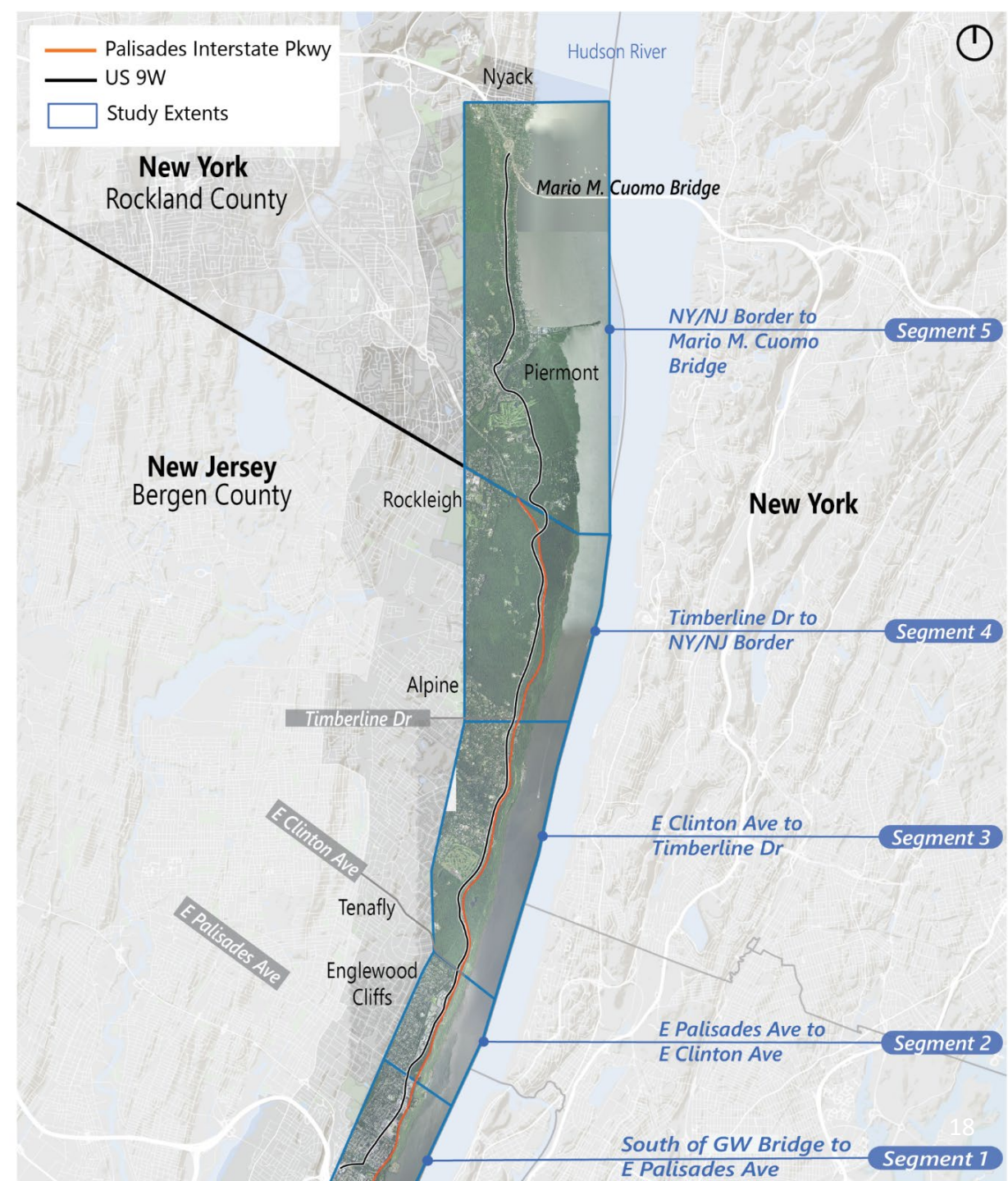
New York

- Rockland Riverway Trail Feasibility Study
- Long Path
- Route 9W
- Raymond G. Esposito Trail / Old Erie Path
- Piermont Ave / River Road
- Joseph B. Clarke Trail
- Tallman Bike Path



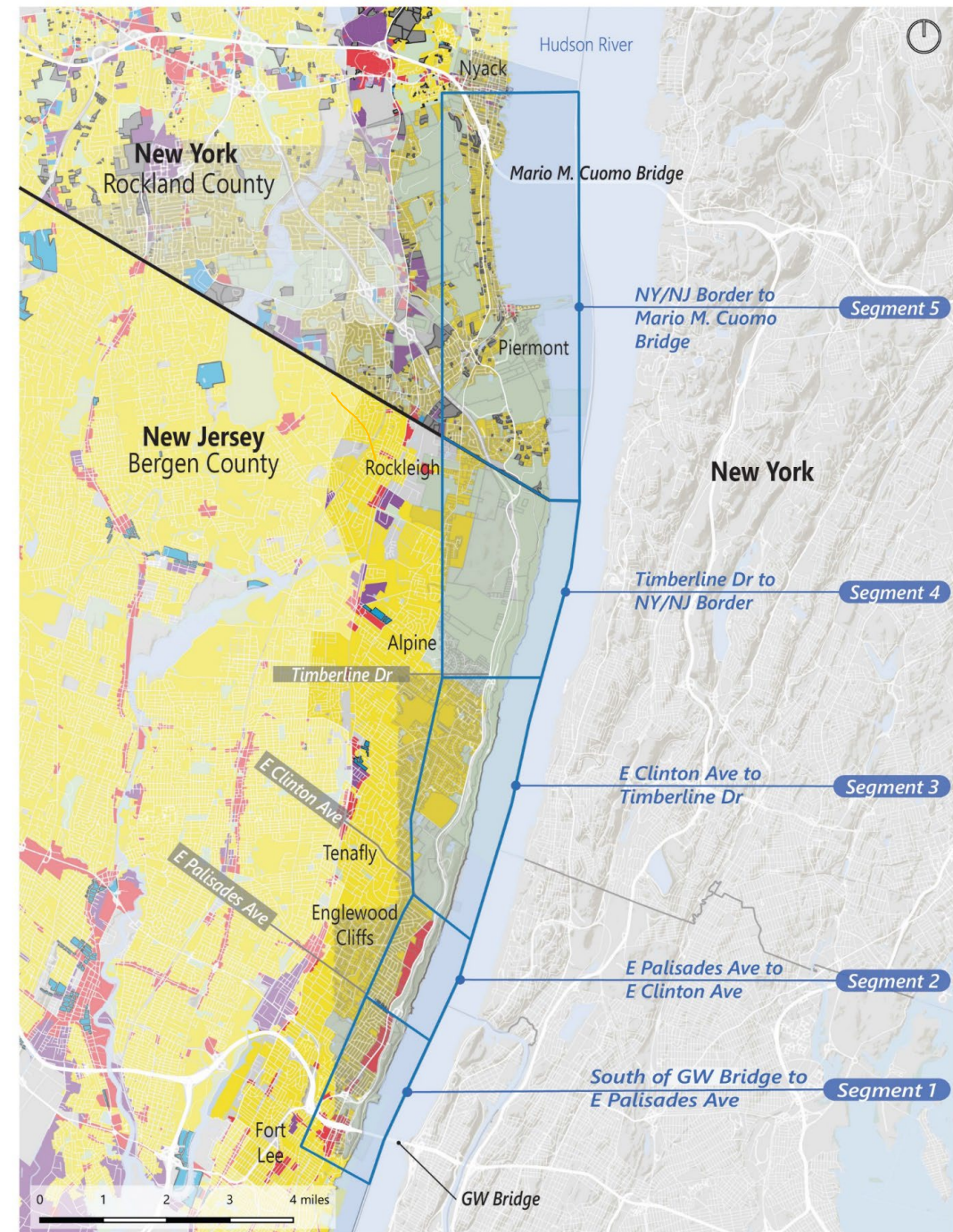
Current Conditions

- Land Use
- Topography
- Demographics
- Equity
- Crash Analysis



Land Use

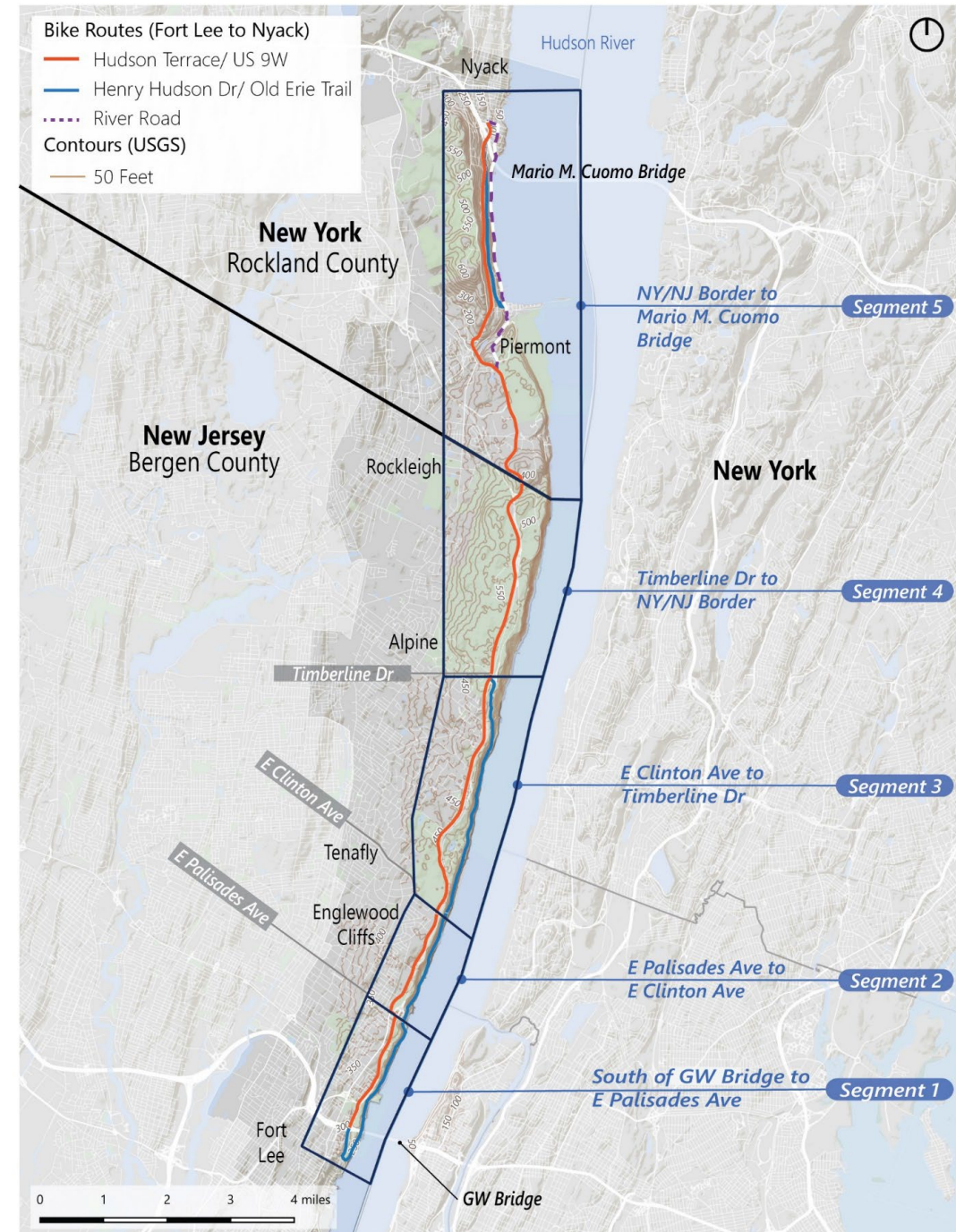
1. **Fort Lee:** Dense, urban, mixed-use, major junctions of roads and bridge
2. **Englewood Cliffs:** Office parks along 9W, single-family housing upland
3. **Alpine Lookout:** low density residential
4. **Borough of Alpine:** mostly parkland with dispersed single-family homes
5. **Rockland County:** Downtowns of Piermont and Nyack separated by Grand View, Tallman Mtn SP



Topography

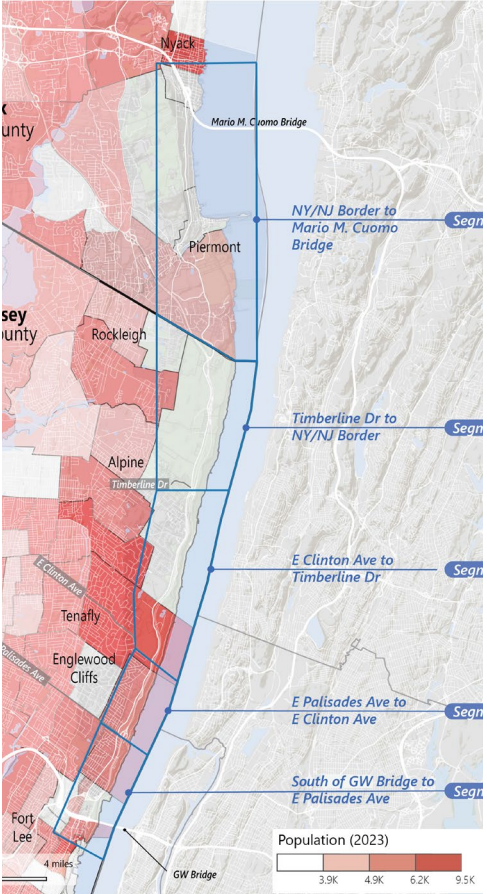
The Palisades provide beautiful scenery, viewpoints, and challenging terrain

- 9W is mostly flat
- Henry Hudson Dr is mostly car-free but very hilly
- Rail trails are mostly flat
- Long Path is hilly over rough terrain

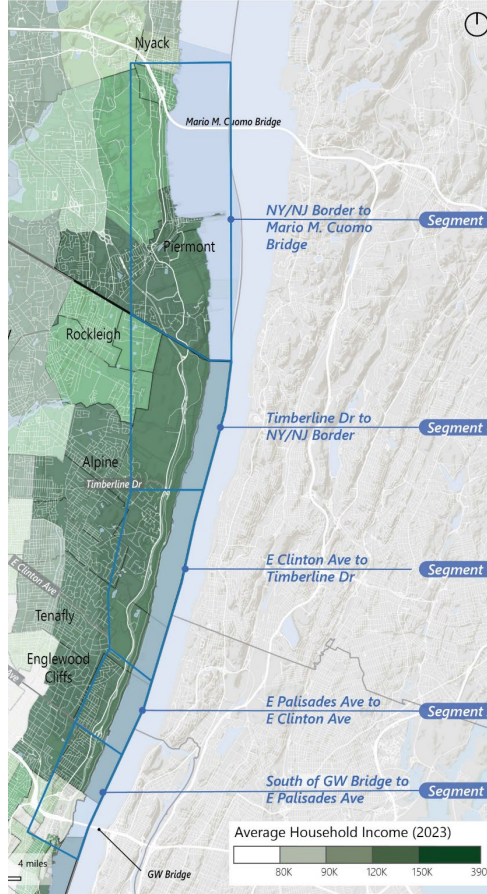


Demographics

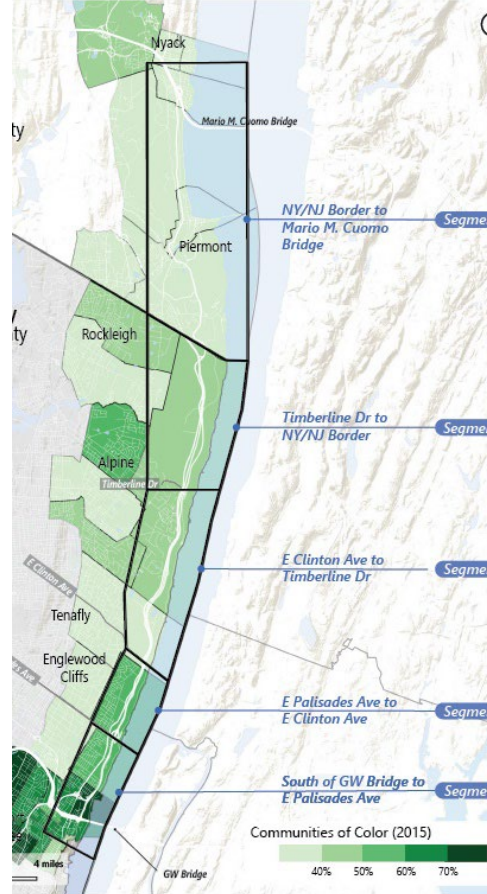
Population



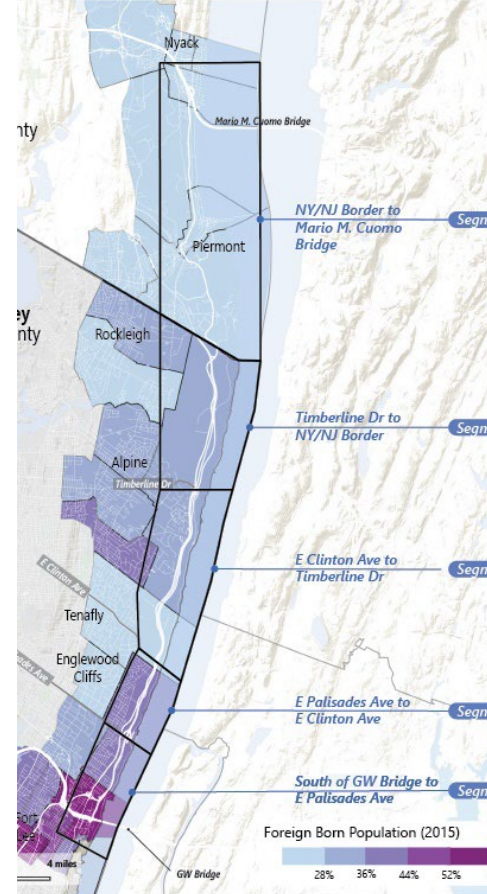
Household Income



Communities of Color

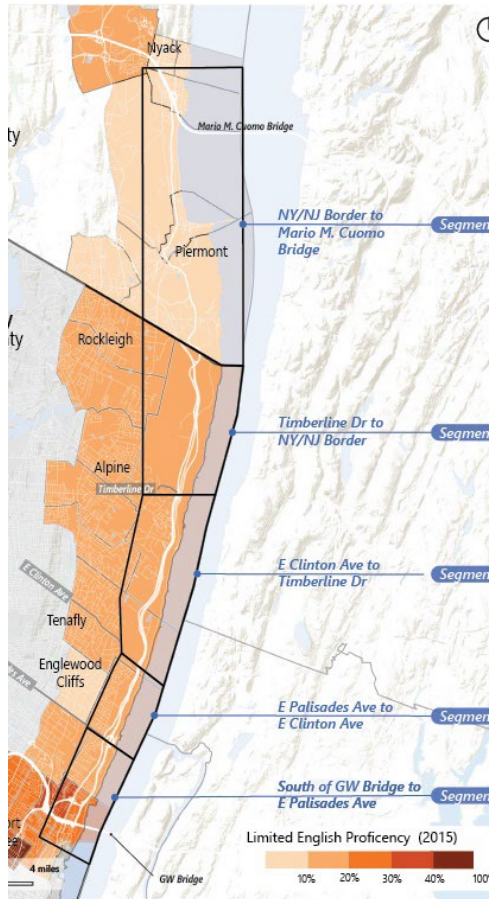


Foreign Born Population

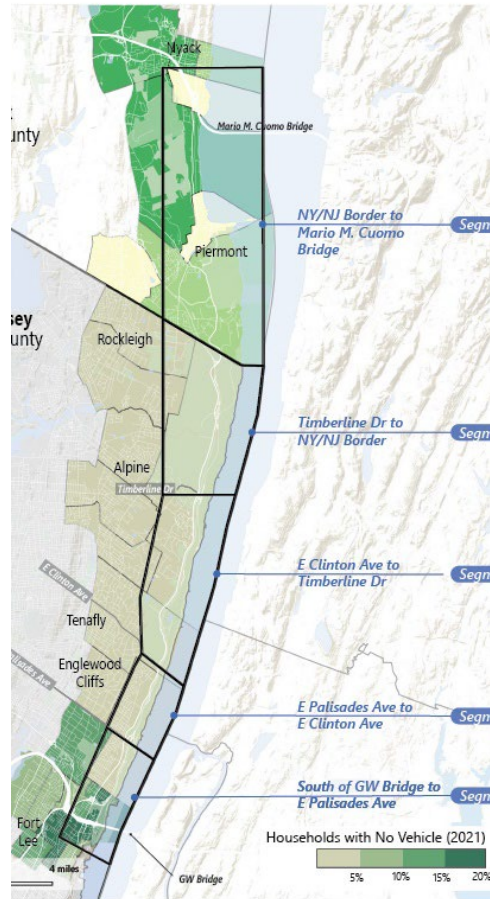


Demographics

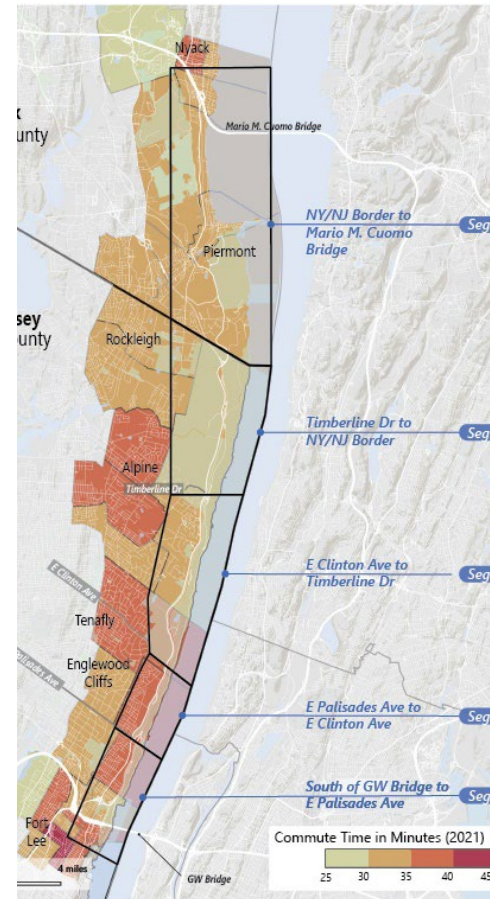
Limited English Proficiency



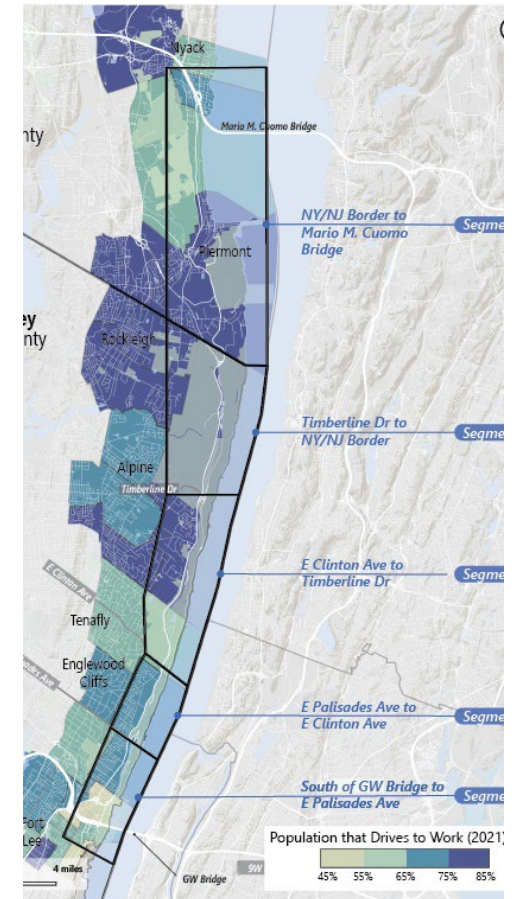
Car-Free Households



Commute Time

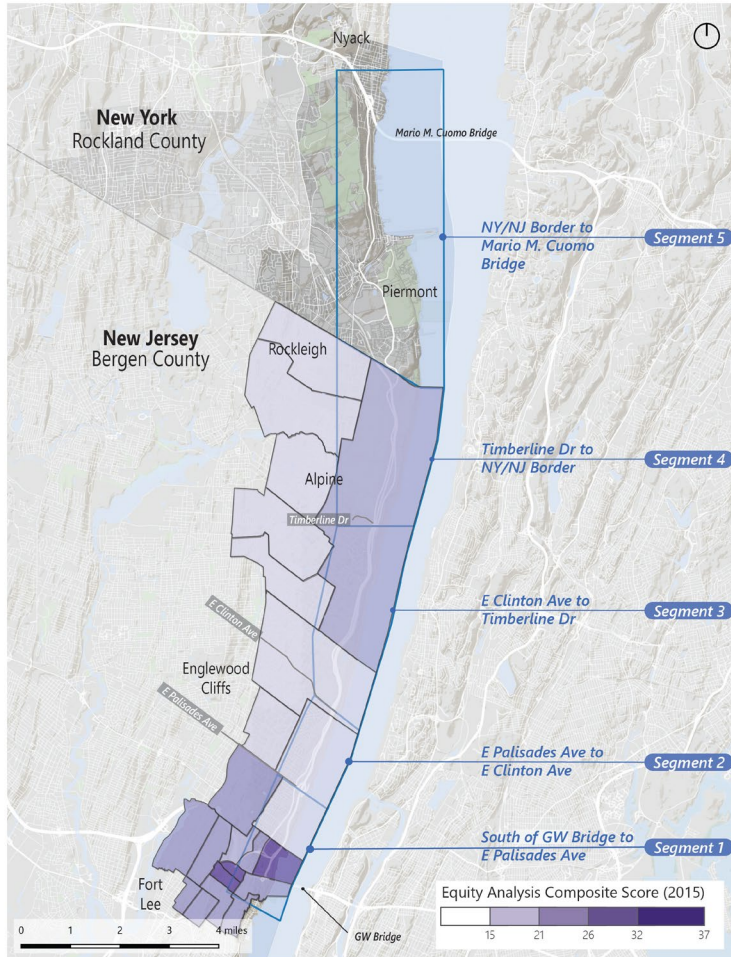


Drive to Work



Equity

New Jersey



New York



Low-Income Community

Tracts where 14% or more of the population earned an income in 2018 at or below the poverty level.

Data from the 2018 ACS, 5-year estimates.

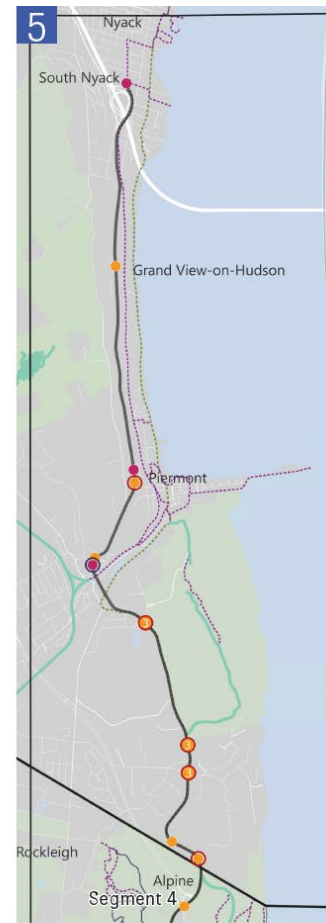
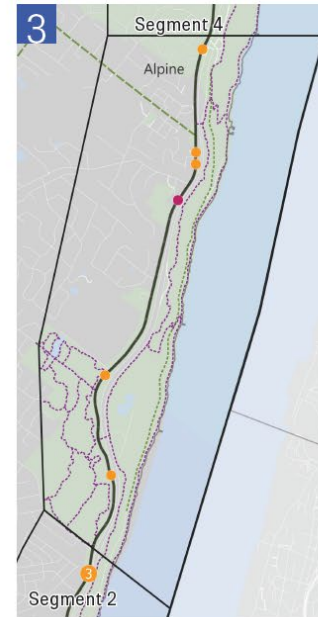
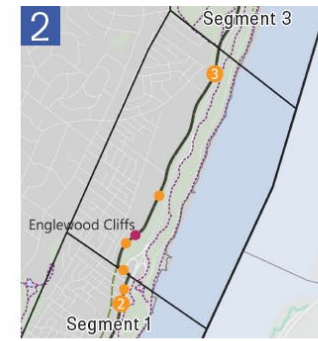
Minority Community

Tracts where the minority population (all racial and ethnic groups excluding non-Hispanic Whites) in 2018 was 57% or more of the regional average.

Data from the 2018 ACS, 5-year estimates.

Crash Analysis

- Crashes that involved people walking and biking
- Most common crashes:
 - At intersection
 - During weekend daylight hours
 - Men ages 30-59



— US 9W

Crash Analysis:

Segment 1- 4 (2016 - 2020) Segment 5 (2018-2023)

- Pedestrian Crash
- Pedestrian Killed or Seriously Injured (KSI)
- Bicyclist Crashes
- Bicyclist Killed or Seriously Injured (KSI)

FIRST ROUND OF PUBLIC WORKSHOPS

Involving and collaborating with individuals, groups, or communities in the study area

1 - TOP OF MIND ISSUES, ASPIRATIONS OR CONCERNS

2 - WHAT IMPROVEMENTS TO WALKING OR BIKING ARE NEEDED IN THE STUDY AREA?

3 – WHAT AREAS DO YOU FIND UNSAFE FOR WALKING OR BIKING IN THE STUDY AREA?

4 – WHAT BENEFITS FROM IMPROVED WALKING OR BIKING IN THE STUDY AREA WOULD YOU LIKE TO SEE FOR YOUR COMMUNITY?

**5 – WHAT WALKING OR BIKING
DESTINATIONS IN THE STUDY AREA
WOULD YOU LIKE TO SEE BETTER
CONNECTED?**

ANY LAST QUESTIONS?

NEXT STEPS

Next Steps

- One more online workshop in March
- In-person workshops in May
 - One each in NJ and NY



THANK YOU!

WWW.PALISADESPATHSTUDY.COM

PALISADESPATHSTUDY@GMAIL.COM